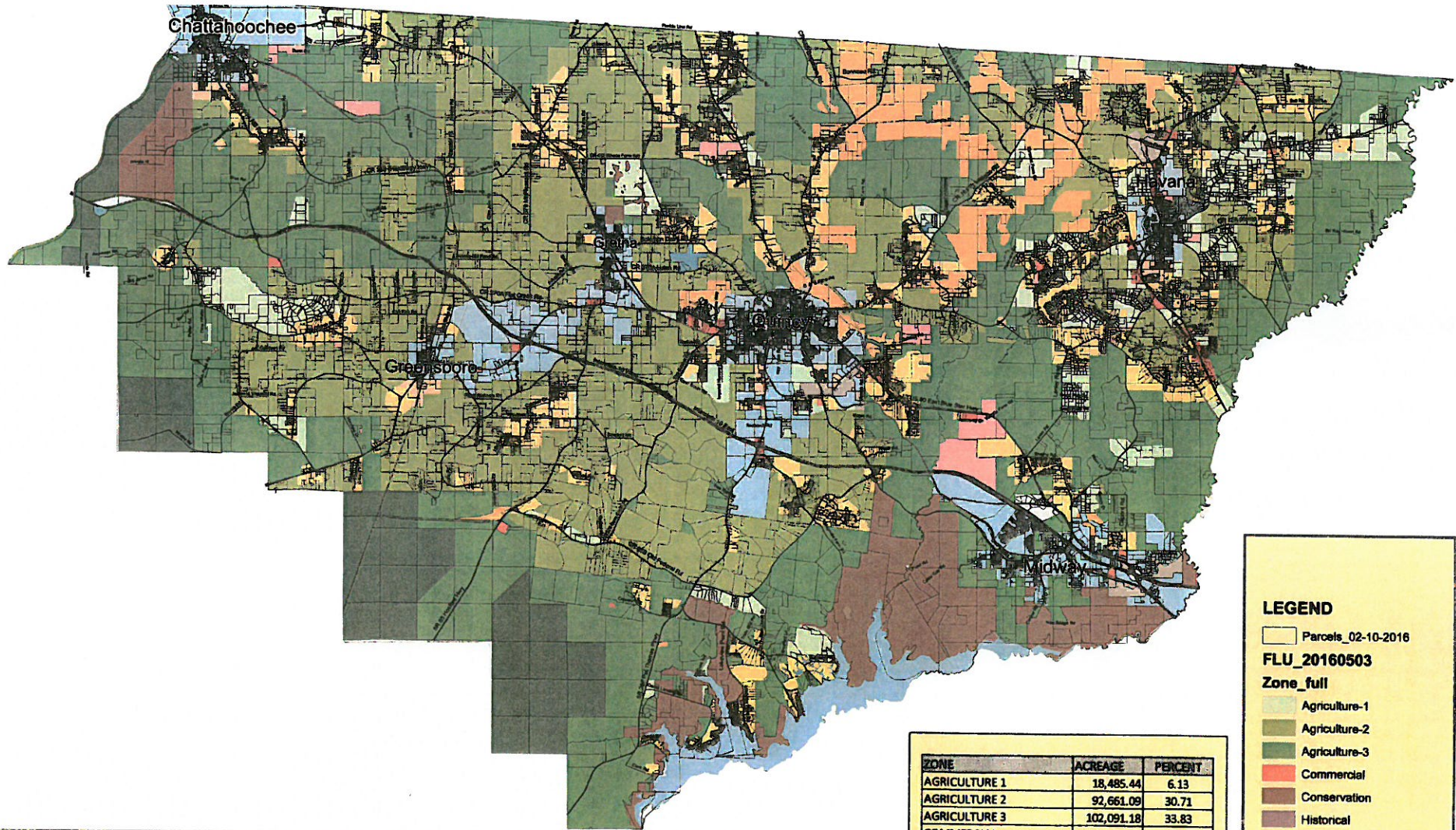


## EXHIBITS

|             |  |
|-------------|--|
| EXHIBIT -1  | FUTURE LAND USE MAP (2015)             |
| EXHIBIT -2  | FUNCTIONAL CLASSIFICATIONS FDOT (2014) |
| EXHIBIT -3  | FUTURE TRANSPORTATION MAP              |
| EXHIBIT -4  | PROPOSED QUINCY BY-PASS                |
| EXHIBIT -5  | AIRPORT & RAIL LINES                   |
| EXHIBIT -6  | SCHOOLS                                |
| EXHIBIT -7  | CENTRAL WATER & SEWER                  |
| EXHIBIT -15 | HISTORIC STRUCTURES AND SITES          |
| EXHIBIT -17 | RECREATIONAL SERVICE AREAS             |
| EXHIBIT -18 | HAZARDOUS MATERIALS LOCTIONS           |

## CONSERVATION ELEMENT (2015)

|             |   |
|-------------|---|
| EXHIBIT -1  | MANAGED CONSERVATION LAND                 |
| EXHIBIT -2  | DEVELOPED AREAS                           |
| EXHIBIT -3  | WETLANDS MAP                              |
| EXHIBIT -4  | FEMA FLOOD ZONES                          |
| EXHIBIT -5  | MAJOR WATERSHEDS                          |
| EXHIBIT -6  | GENERAL SOILS ASSOCIATIONS                |
| EXHIBIT -7  | SOIL LIMITATIONS                          |
| EXHIBIT -8  | GEOLOGICAL FORMATIONS & MINERAL RESOURCES |
| EXHIBIT -9  | BIODIVERSITY HOTSPOTS                     |
| EXHIBIT -10 | ENERGY CONSERVATION FEATURES              |
| MAP -5.1    | OUTSTANDING FLORIDA WATERS                |



# LEGEND

Parcels\_02-10-2016

FLU\_20160503

Zone\_full

- Agriculture-1
- Agriculture-2
- Agriculture-3
- Commercial
- Conservation
- Historical
- Heavy Industrial
- Light Industrial
- Mining
- Municipal
- Public
- Recreational
- Rural Residential
- Silviculture

| ZONE               | ACREAGE    | PERCENT |
|--------------------|------------|---------|
| AGRICULTURE 1      | 18,485.44  | 6.13    |
| AGRICULTURE 2      | 92,661.09  | 30.71   |
| AGRICULTURE 3      | 102,091.18 | 33.83   |
| COMMERCIAL         | 1,591.15   | 0.53    |
| CONSERVATION       | 17,105.28  | 5.66    |
| HEAVY INDUSTRIAL   | 1,407.14   | 0.47    |
| HISTORICAL         | 22.11      | 0.01    |
| LIGHT INDUSTRIAL   | 297.57     | 0.10    |
| MINING             | 11,779.33  | 3.90    |
| PUBLIC             | 2,759.29   | 0.91    |
| RECREATIONAL       | 411.80     | 0.14    |
| RURAL RESIDENTIAL  | 33,266.36  | 11.03   |
| SILVICULTURE       | 18,448.63  | 6.11    |
| URBAN SERVICE AREA | 1,407.19   | 0.47    |



0 1 2 4 6 8

Miles

This map is intended for planning purposes only. The information shown on the map is from the best available data at the time. Gadsden County assumes no responsibility for any errors or inaccuracies.



Map produced May 25, 2016



# GADSDEN COUNTY FUNCTIONAL CLASSIFICATIONS

Recommended By:  
Eric Hinson 6/3/14  
Chairman, Board of County Commissioners Date

[Signature] 6/16/14  
Chairman, Capital Region Transportation Planning Agency Date

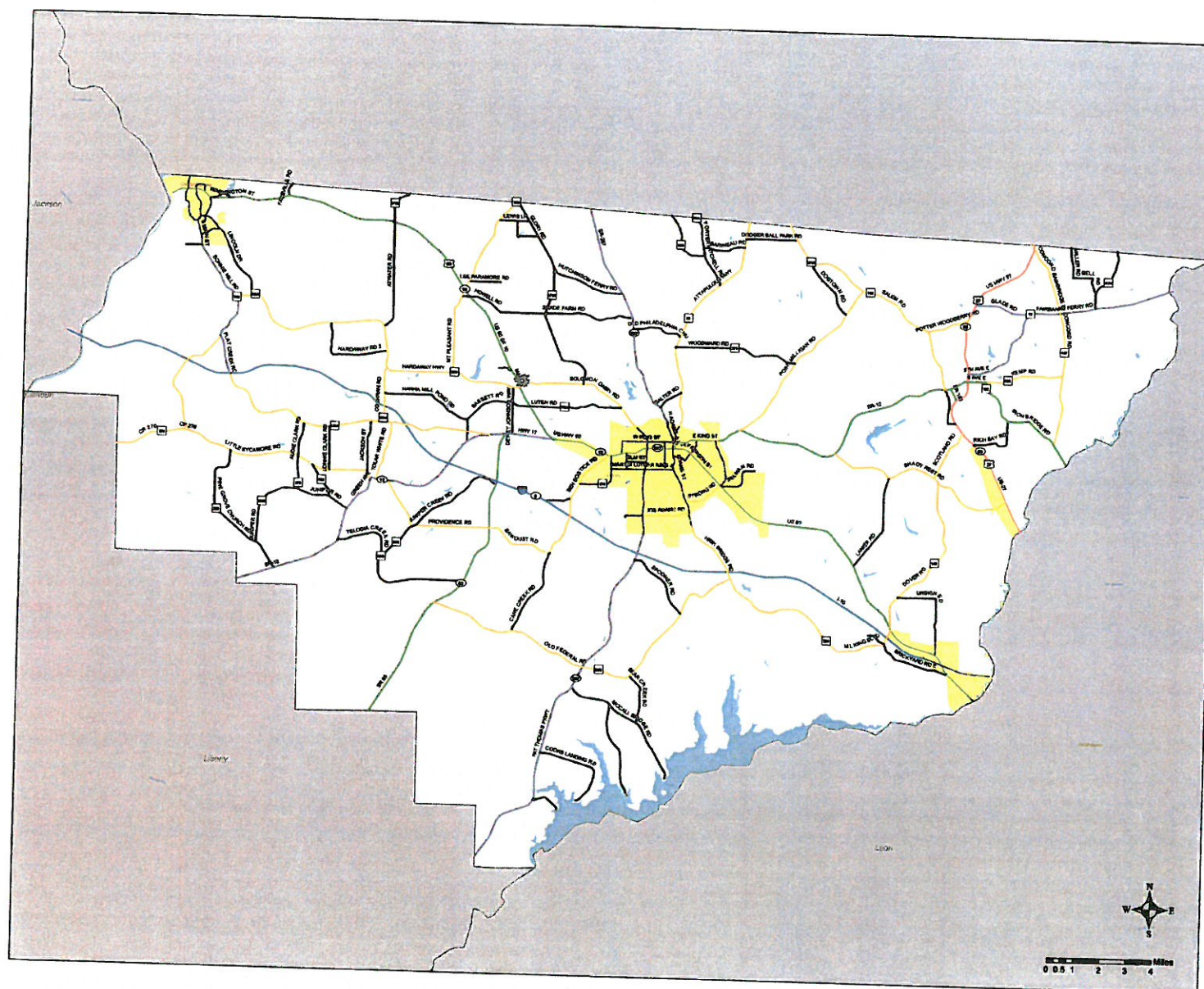
[Signature] 6/17/14  
Florida Department of Transportation Date

Approved By:  
[Signature] 07/25/2014  
Federal Highway Administration Date

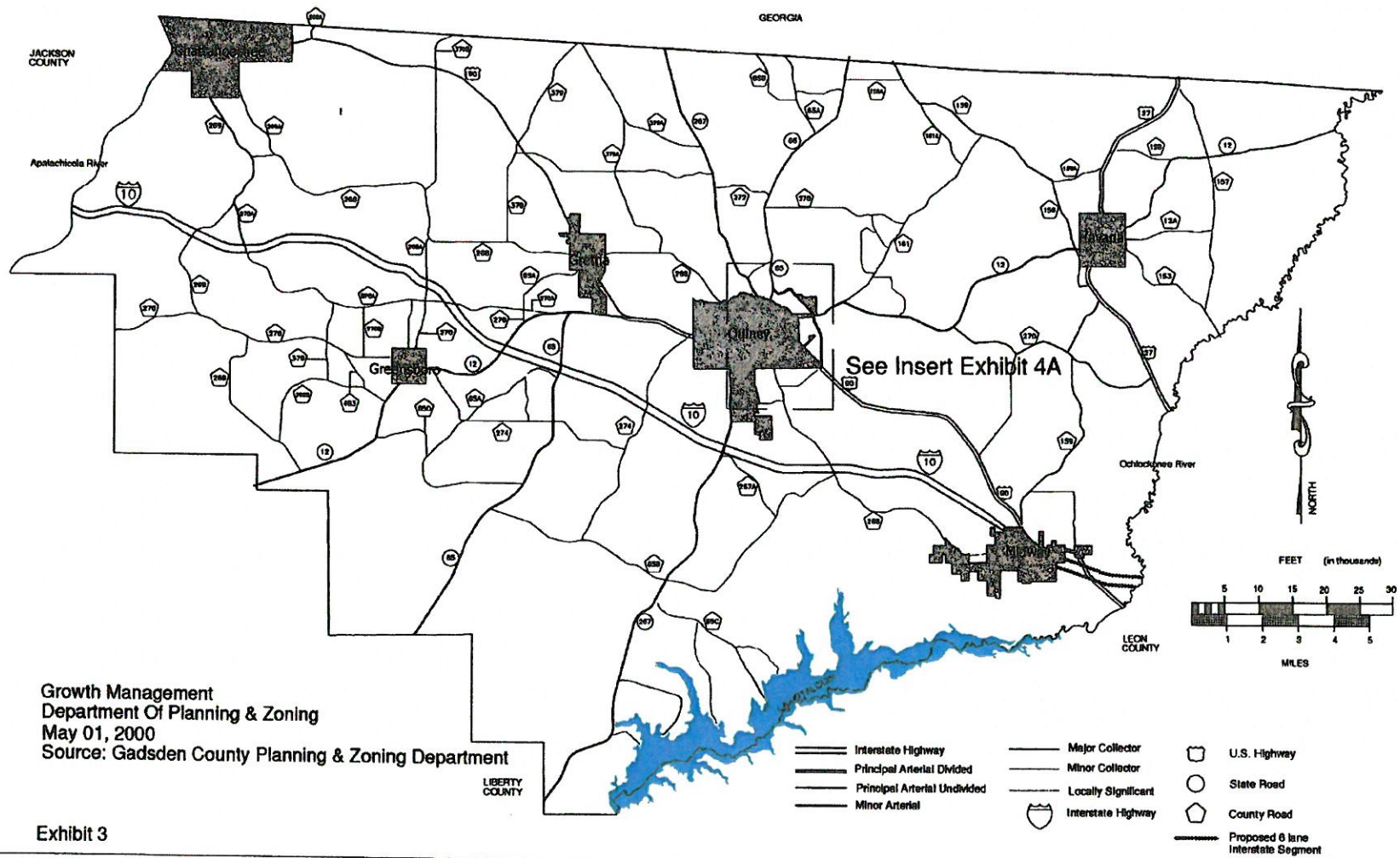
| Gadsden County  |  |
|---|--|
| 01 - Principal Arterial-Interstate RURAL                |  |
| 02 - Principal Arterial-Expressway RURAL                |  |
| 04 - Principal Arterial-Other RURAL                     |  |
| 06 - Minor Arterial RURAL                               |  |
| 07 - Major Collector RURAL                              |  |
| 08 - Minor Collector RURAL                              |  |
| 09 - Local RURAL  |  |
| 11 - Principal Arterial-Interstate URBAN                |  |
| 12 - Principal Arterial-Expressway and Expressway URBAN |  |
| 14 - Principal Arterial-Other URBAN                     |  |
| 16 - Minor Arterial URBAN                               |  |
| 17 - Major Collector URBAN                              |  |
| 18 - Minor Collector (Fed Aid) URBAN                    |  |
| 19 - Local URBAN  |  |
| Urban Boundary  |  |

Prepared By:  
FLORIDA DEPARTMENT OF TRANSPORTATION  
in cooperation with the  
US DEPARTMENT OF TRANSPORTATION

File Created:  
May 7, 2014

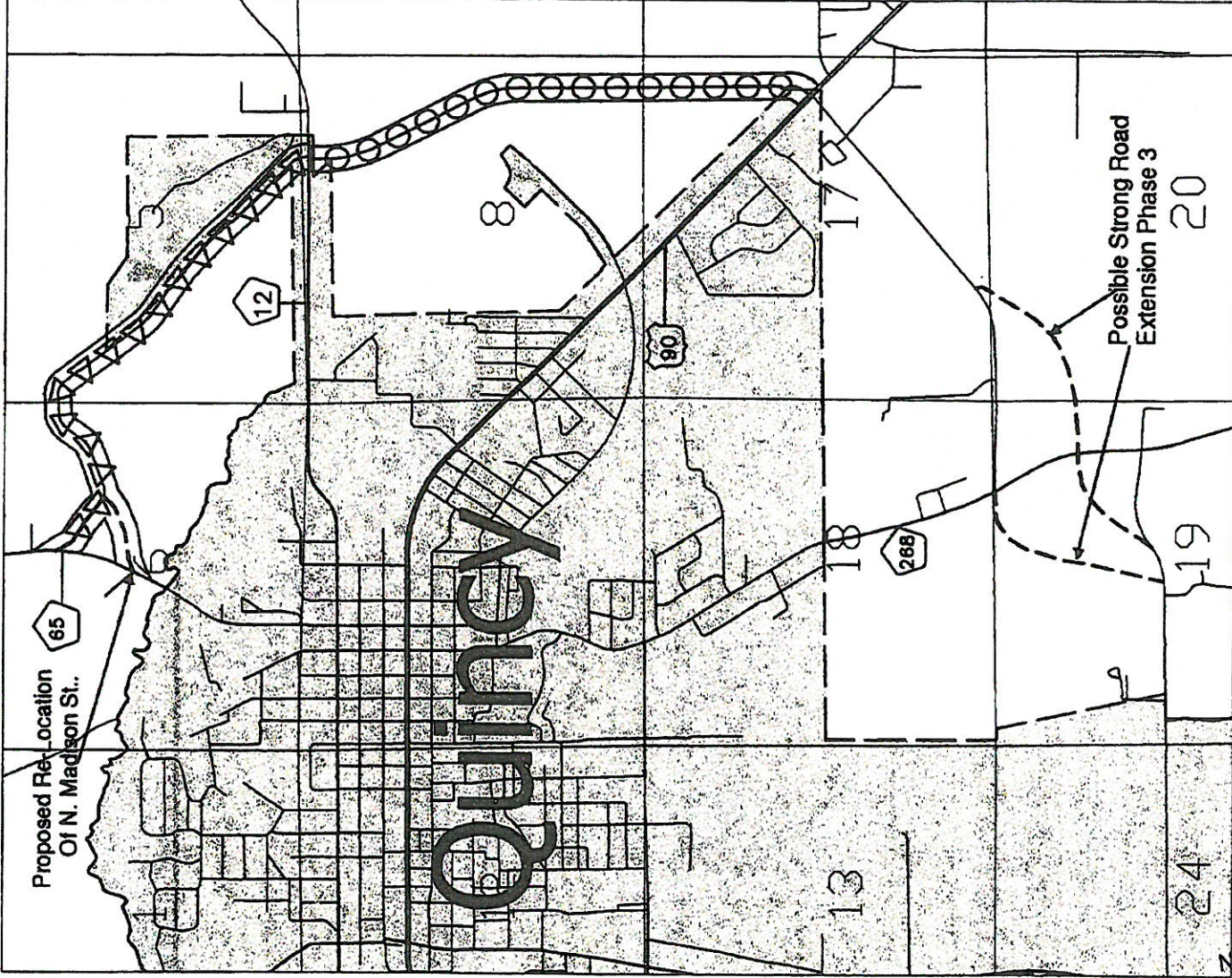


# Gadsden County Future Transportation Map





# Proposed Quincy By-Pass



Exhibit

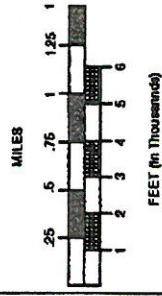
4

Sources: PBSJ Engineering  
Gadsden County P&Z



○ Proposed Quincy By-Pass  
(Re-Routed SR 12)  
By FDOT, Phase 1

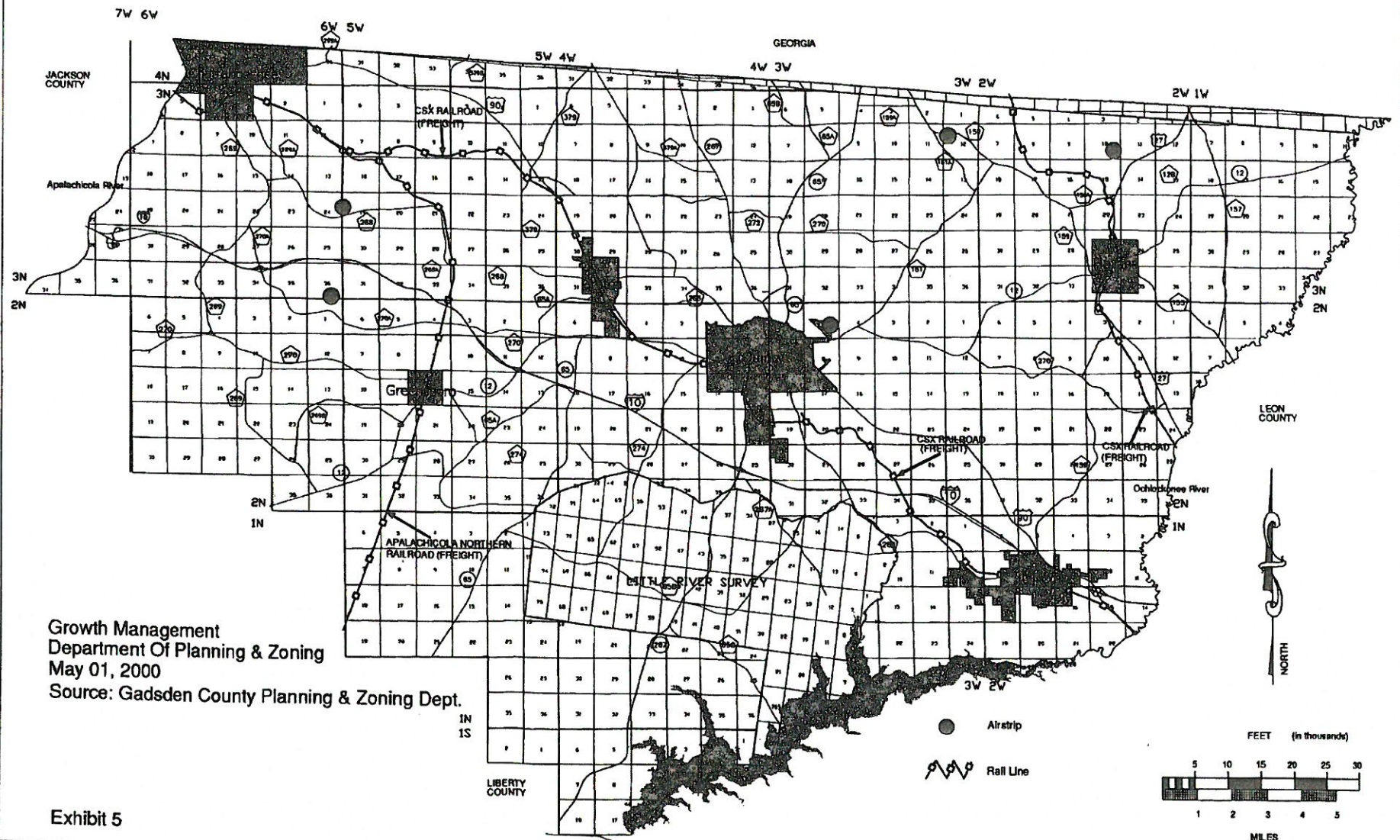
△ Proposed C&E Farm Rd.  
Improvements (Re-Routed  
CR 65) By County  
Phase 2



Growth Management  
Department Of Planning & Zoning

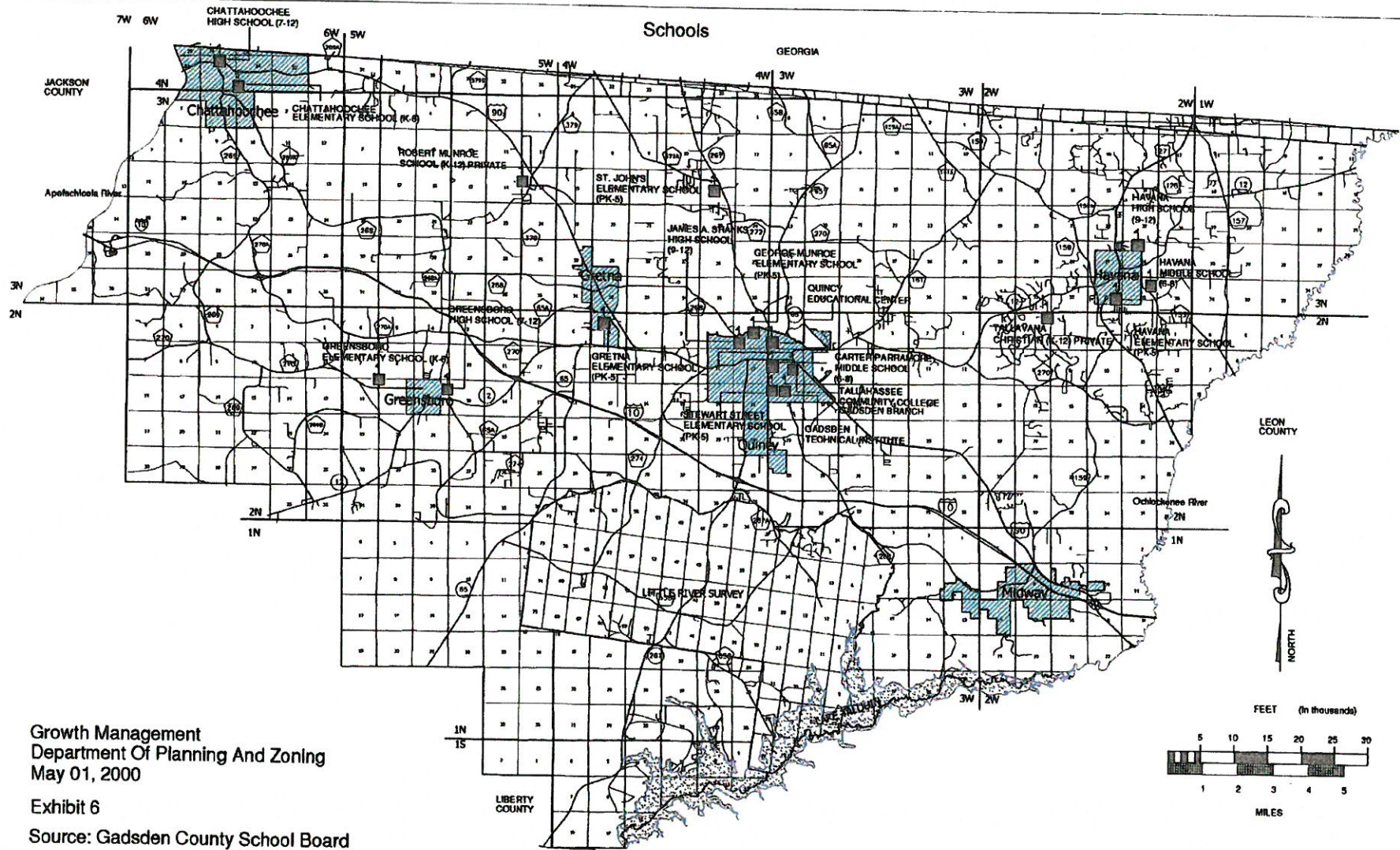


# Airports & Rail Lines





# Schools

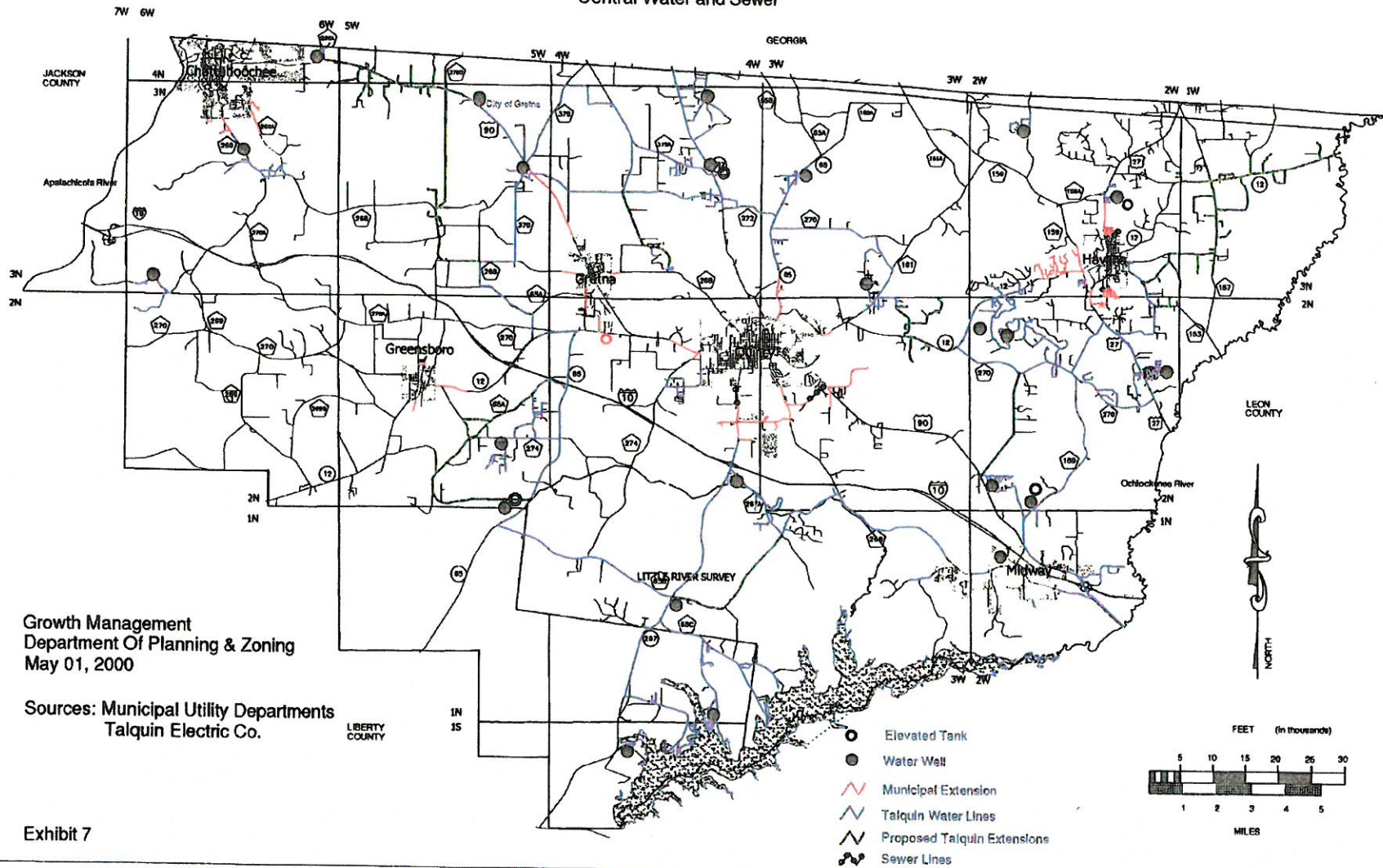


Growth Management  
Department Of Planning And Zoning  
May 01, 2000

Exhibit 6

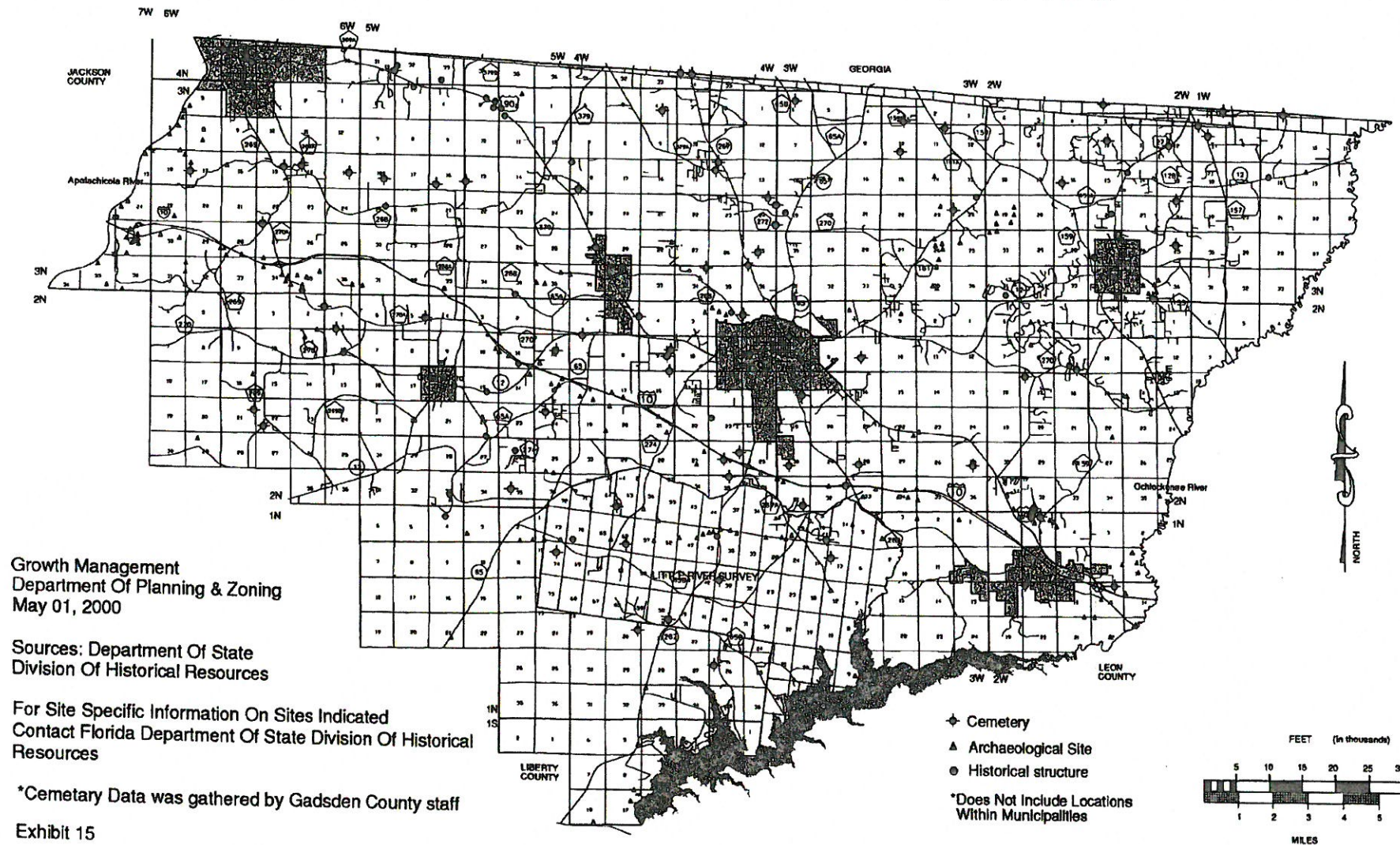
Source: Gadsden County School Board

# Central Water and Sewer





# Historical Structures And Sites





7W 6W

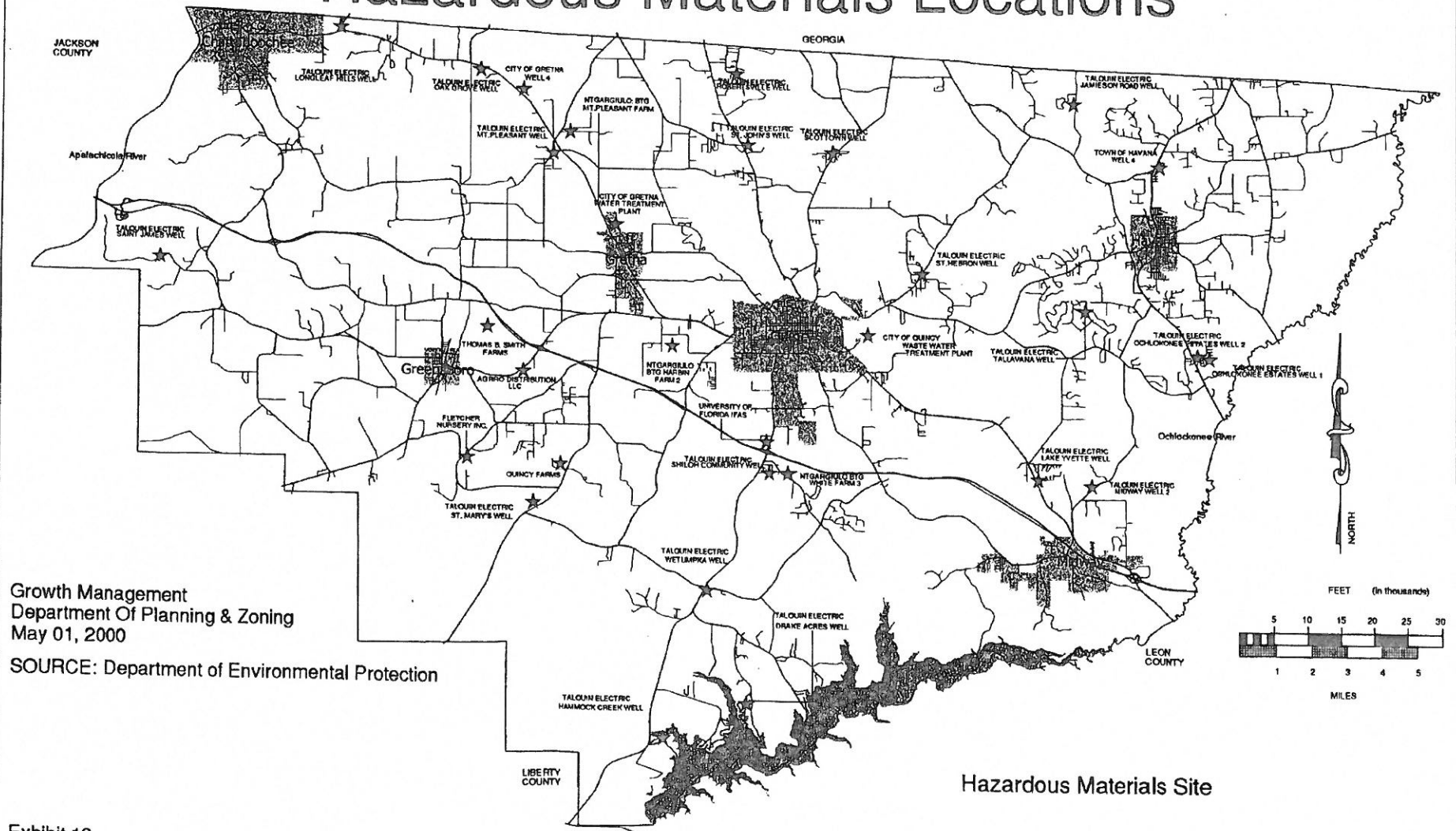


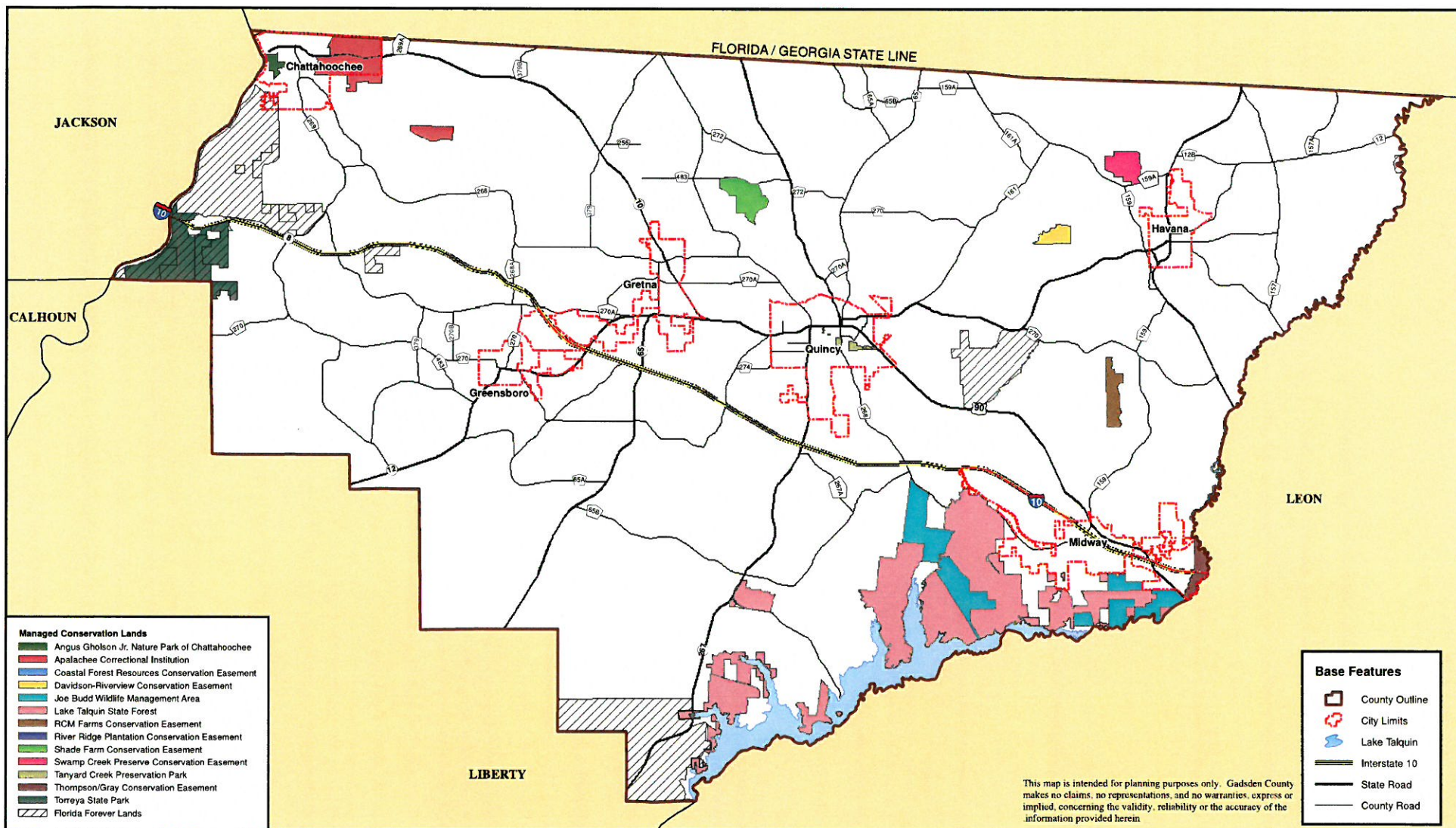
SOURCES: Gadsden County Planning & Zoning Dept.  
Department of Environmental Protection  
Delorme

Exhibit 17



# Hazardous Materials Locations





## EXHIBIT 1

DATA SOURCE: Florida Natural Areas Inventory  
Florida Conservation Lands - June, 2015  
Florida Forever Acquisitions - November 2014

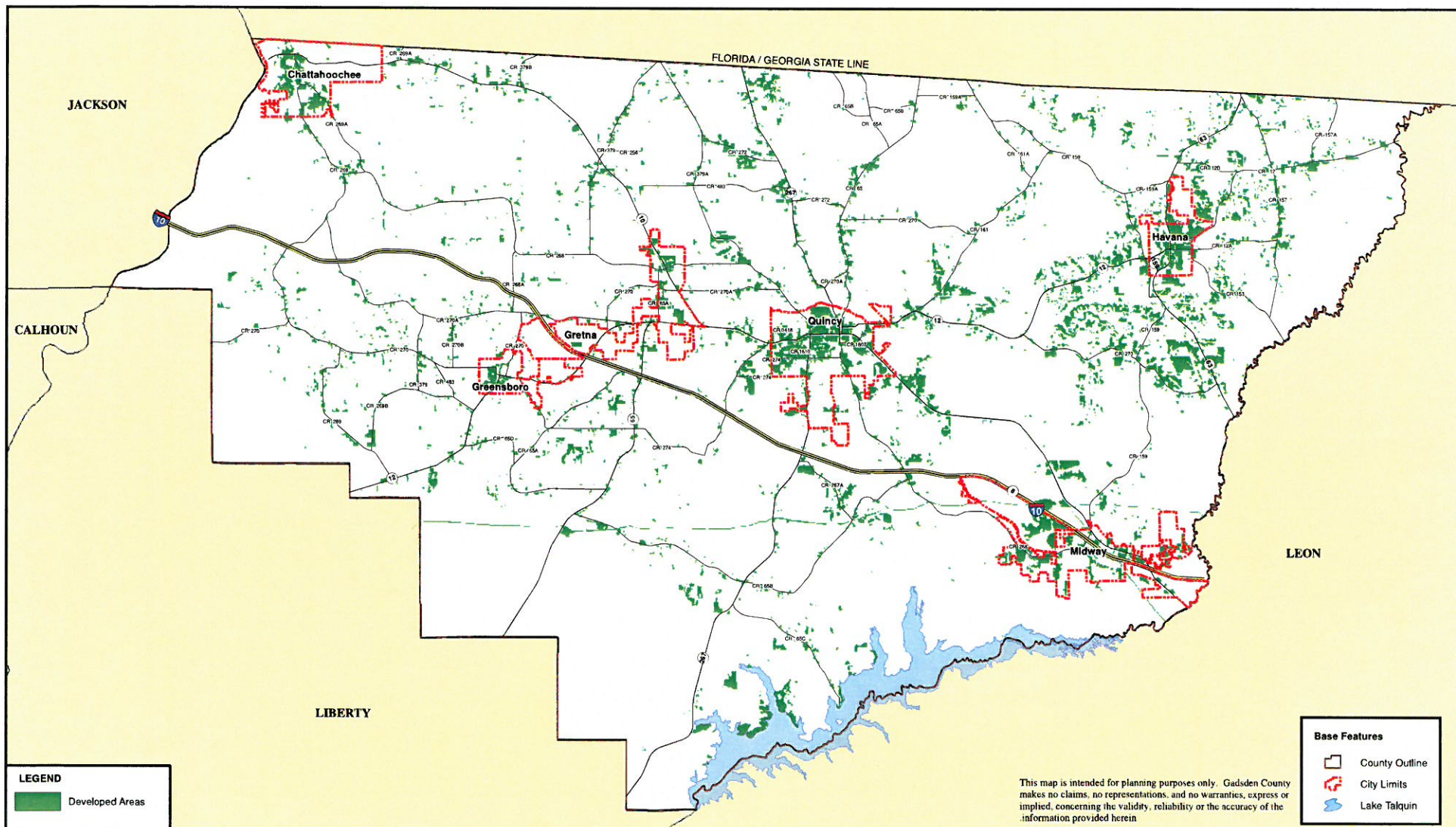
PREPARED BY: PREBLE-RISH, INC.  
S'Ray July 2015  
K:\228.100 EAR Amendments\GIS Comp Plans

# MANAGED CONSERVATION LAND

## GADSDEN COUNTY COMPREHENSIVE PLAN DATA AND ANALYSIS







## EXHIBIT 2

DATA SOURCE: Northwest Florida Water Management District  
2012-2013 Land Use

PREPARED BY: PREBLE-RISH, INC.  
SRay July 2015  
K:\228.100 EAR Amendments\GIS Comp Plans

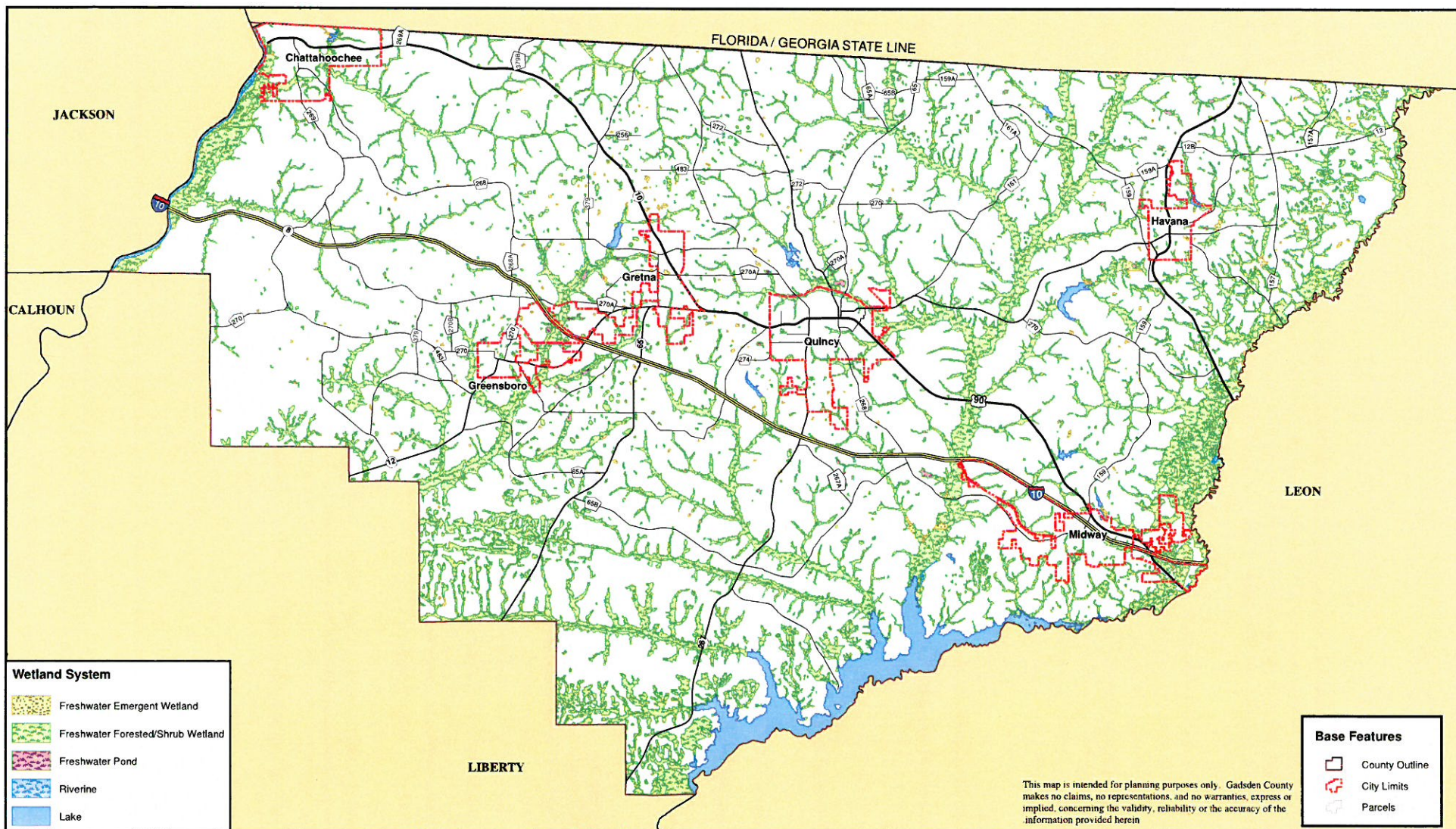
## DEVELOPED AREAS

### GADSDEN COUNTY COMPREHENSIVE PLAN DATA AND ANALYSIS

0 0.5 1 2 3  
Miles







## EXHIBIT 3

DATA SOURCE: U.S. Fish and Wildlife Service  
National Wetlands Inventory - May, 2015

PREPARED BY: PREBLE-RISH, INC.  
S-Ray July 2015  
K:\228.100 EAR Amendments\GIS Comp Plans

# WETLANDS MAP

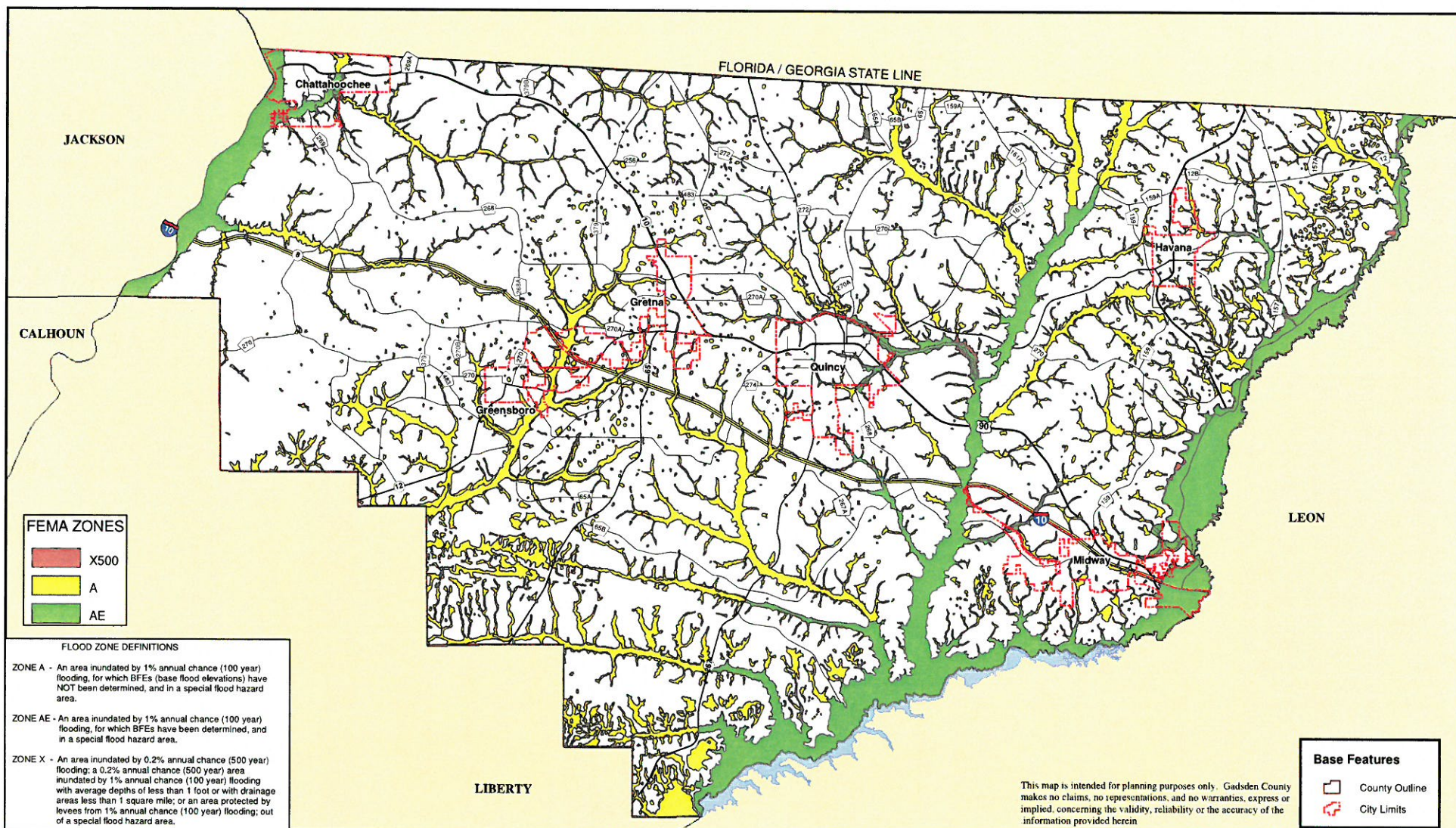
## GADSDEN COUNTY COMPREHENSIVE PLAN DATA AND ANALYSIS

0 0.5 1 2 3  
Miles

N  
1:14,000 ft  
MAP SCALE  
(11"x17" Print Format)







## EXHIBIT 4

**DATA SOURCE:** Federal Emergency Management Agency  
Flood Hazard Zones of the Digital Flood Insurance Map (DFIRM)  
February, 2009

**PREPARED BY:** PREBLE-RISH, INC.  
SRay July 2015  
K:\228.100 EAR Amendments\GIS Comp Plans

# FEMA FLOOD ZONES

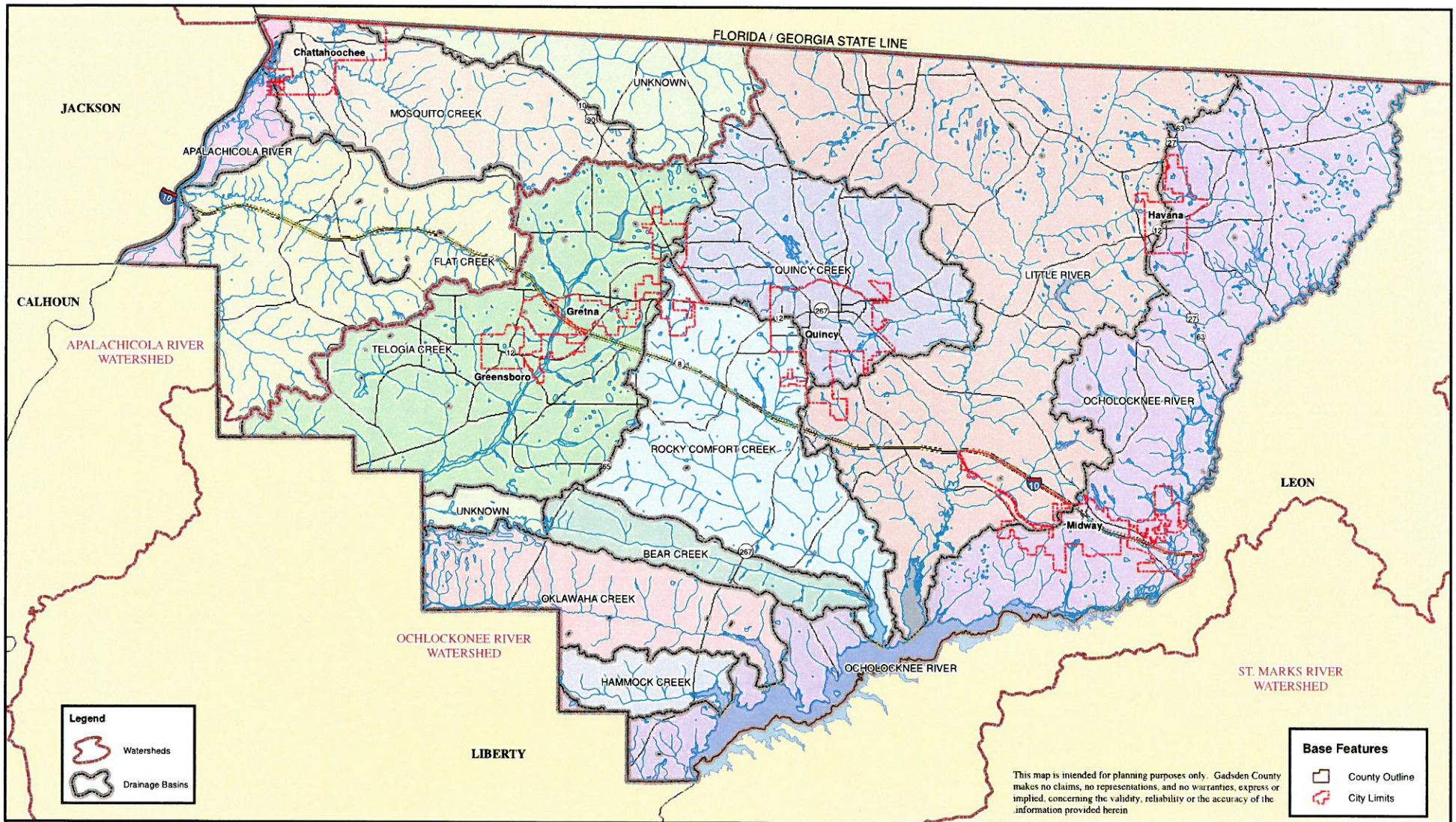
## GADSDEN COUNTY COMPREHENSIVE PLAN DATA AND ANALYSIS

0 0.5 1 2 3  
Miles

N  
1:14,064 ft  
MAP SCALE  
(11"x17" Print Format)







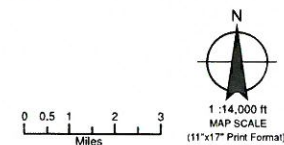
## EXHIBIT 5

DATA SOURCE: Northwest Florida Water Management District

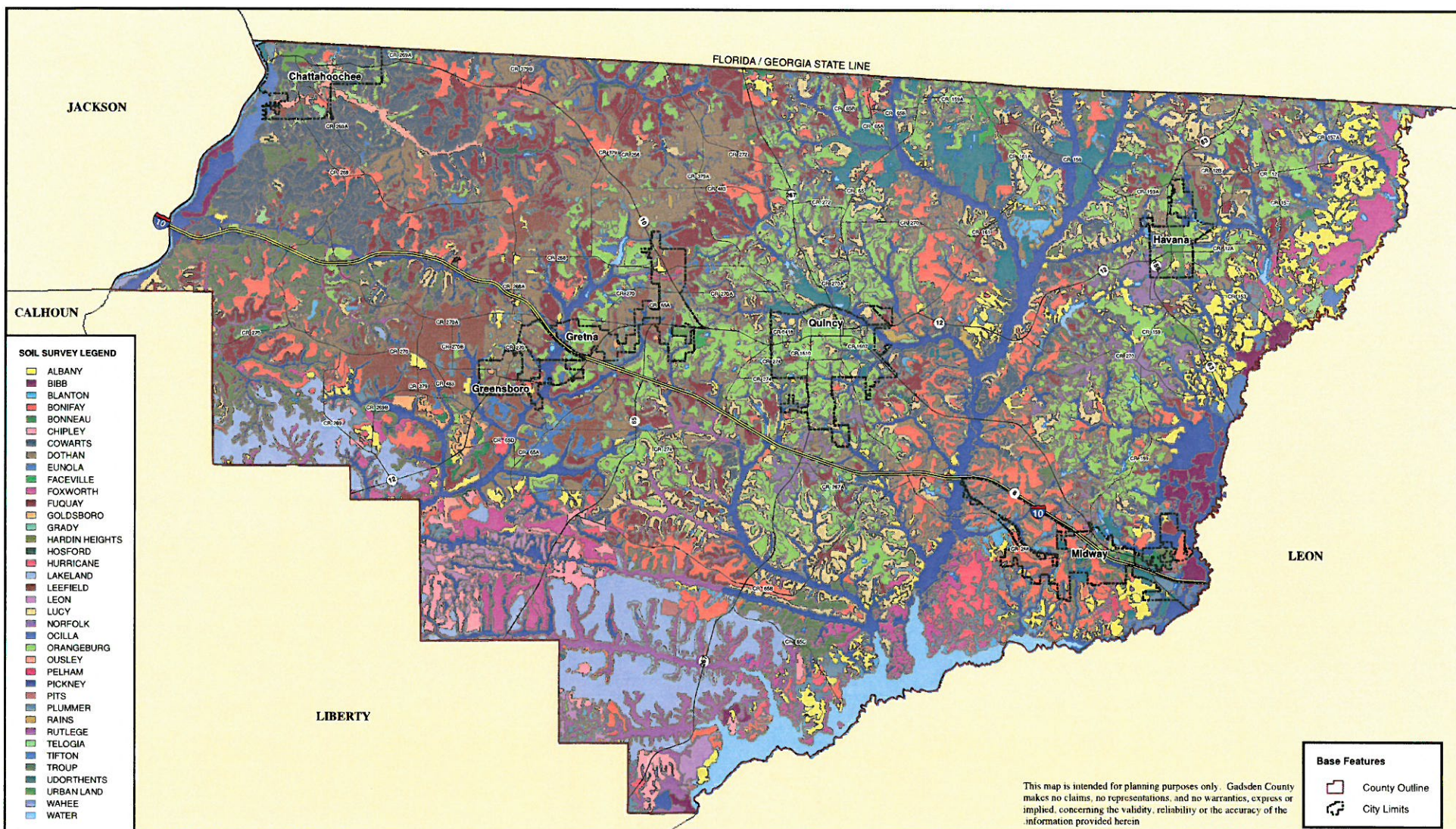
PREPARED BY: PREBLE-RISH, INC.  
S-Ray July 2015  
K:\228,100 EAR Amendments\GIS Comp Plans

# MAJOR WATERSHEDS

## GADSDEN COUNTY COMPREHENSIVE PLAN DATA AND ANALYSIS







## EXHIBIT 6

DATA SOURCE: USDA, Natural Resources Conservation Service

PREPARED BY: PREBLE-RISH, INC.  
S-Ray July 2015  
K\228,100 EAR Amendments\GIS Comp Plans

# GENERAL SOILS ASSOCIATIONS

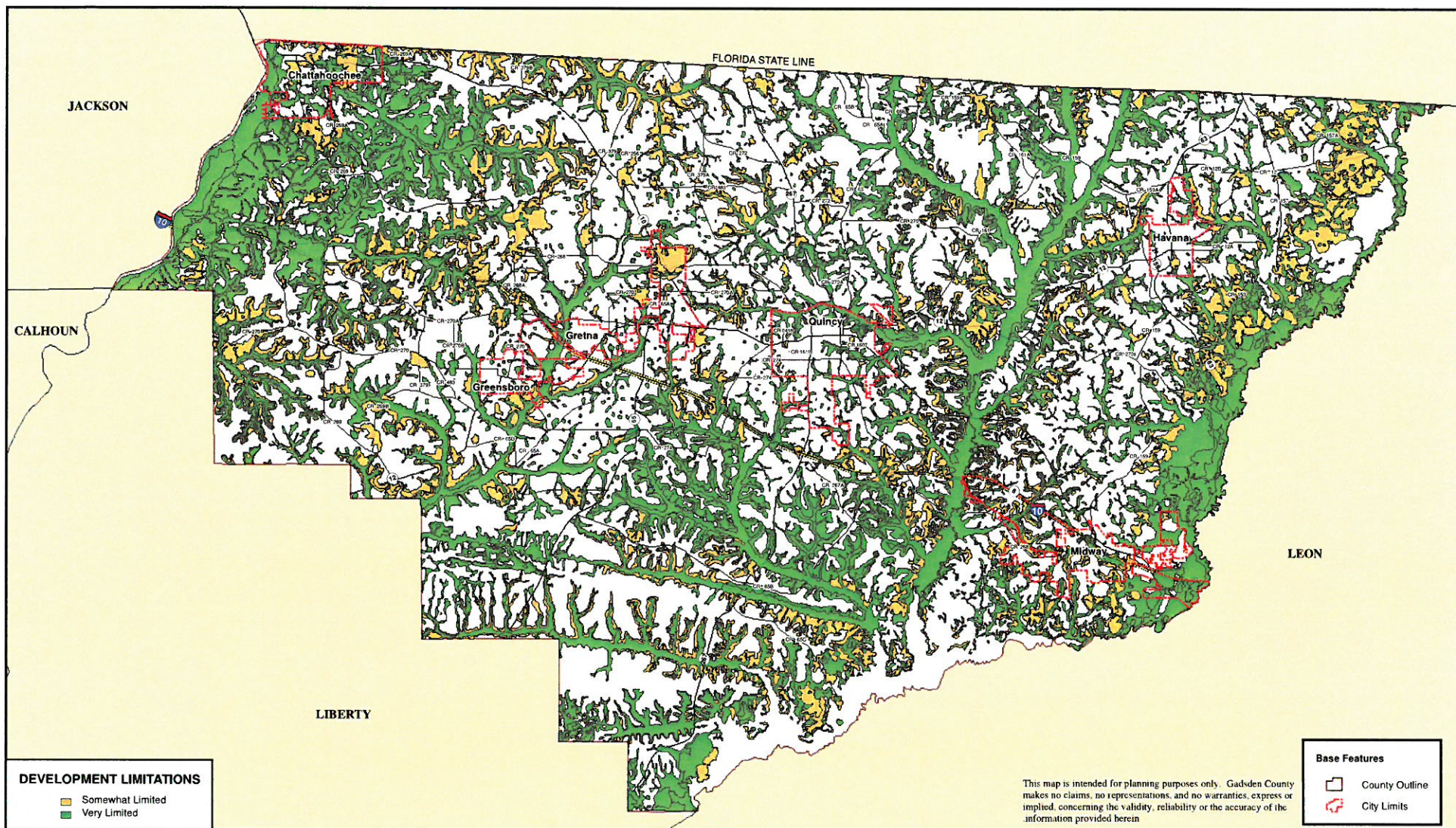
## GADSDEN COUNTY COMPREHENSIVE PLAN DATA AND ANALYSIS

0 0.5 1 2 3  
Miles

N  
1:14,000 ft  
MAP SCALE  
(11"x17" Print Format)







## EXHIBIT 7

DATA SOURCE: USDA, Natural Resources Conservation Services

PREPARED BY: PREBLE-RISH, INC.  
S-Ray July 2015  
K1228.100 EAR Amendments/GIS Comp Plans

## SOIL LIMITATIONS

### GADSDEN COUNTY COMPREHENSIVE PLAN DATA AND ANALYSIS

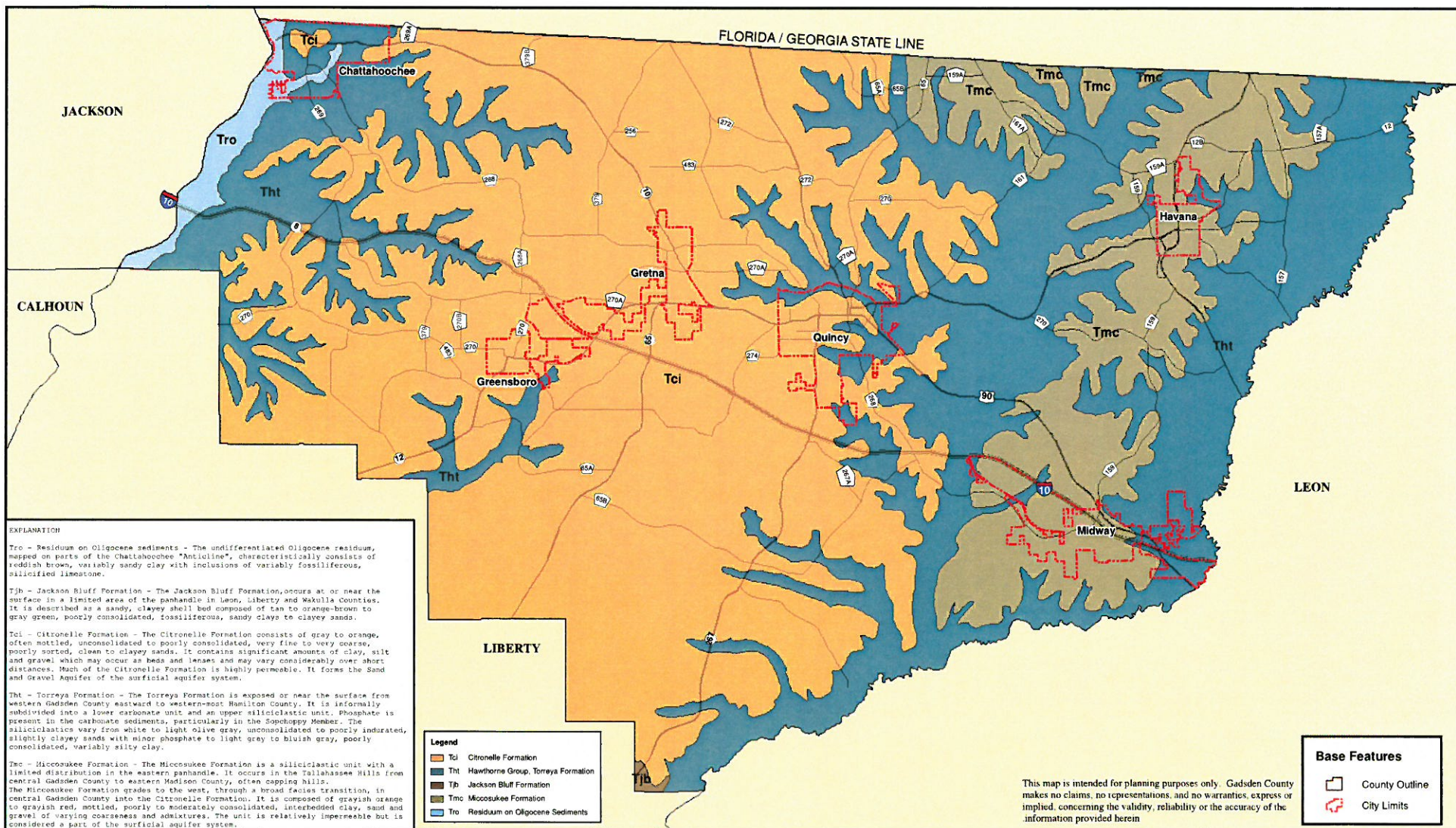
0 0.5 1 2 3  
Miles



1:14,000 ft  
MAP SCALE  
(11"x17" Print Format)







## EXHIBIT 8

DATA SOURCE: U.S. Geological Survey

PREPARED BY: PREBLE-RISH, INC.  
S:Ray July 2015  
K:228.100 EAR Amendments/GIS Comp Plans

# GEOLOGICAL FORMATIONS AND MINERAL RESOURCES

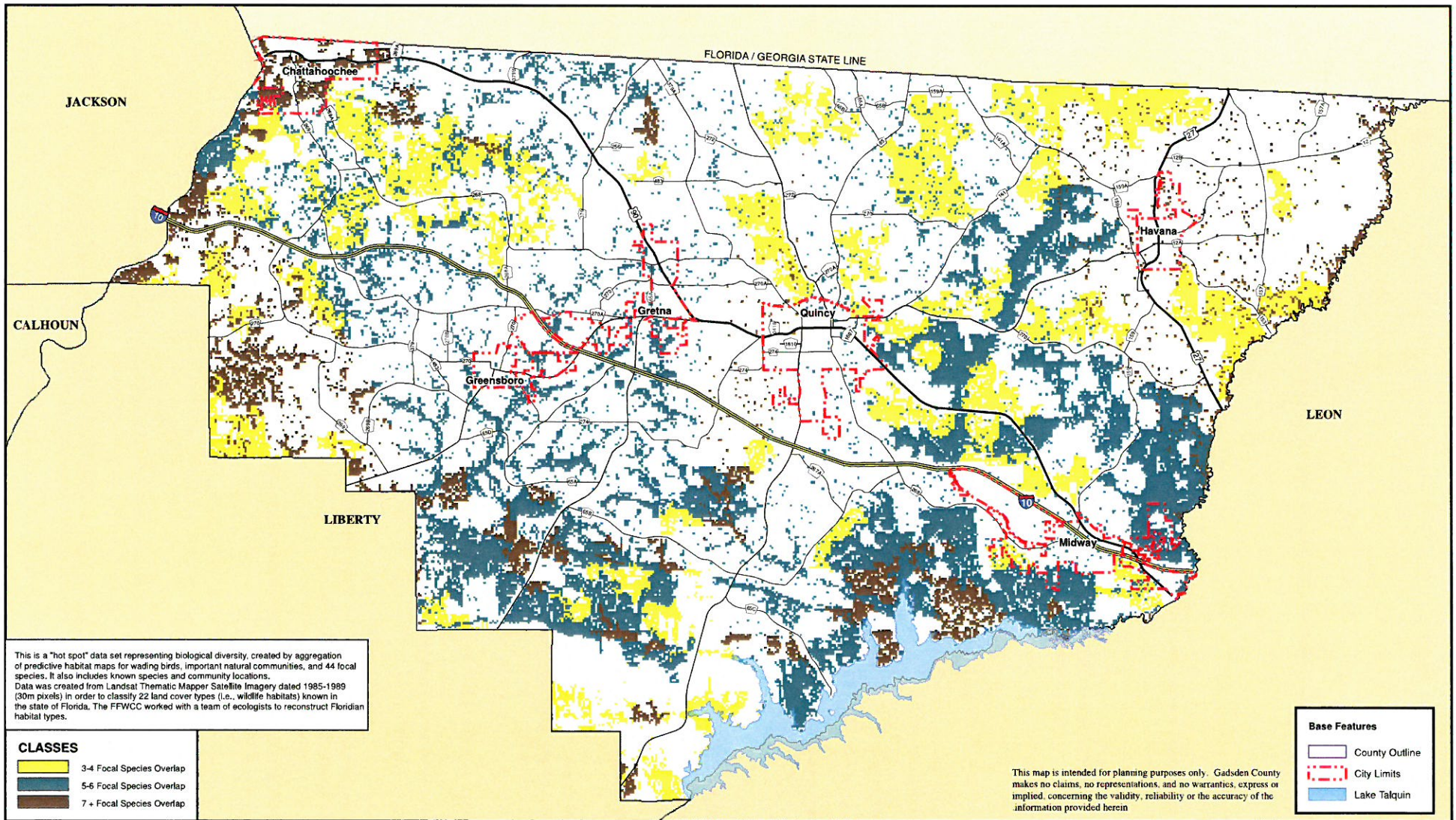
## GADSDEN COUNTY COMPREHENSIVE PLAN DATA AND ANALYSIS

0 0.5 1 2 3  
Miles

N  
1:14,000 ft  
MAP SCALE  
(11"x17" Print Format)







## EXHIBIT 9

## BIODIVERSITY HOTSPOTS

**DATA SOURCE:** Florida Fish & Wildlife Conservation Commission  
Data derived from 1985 - 1989 Landsat Thematic Mapper Imagery.

**PREPARED BY:** PREBLE-RISH, INC.  
SRay - July 2015

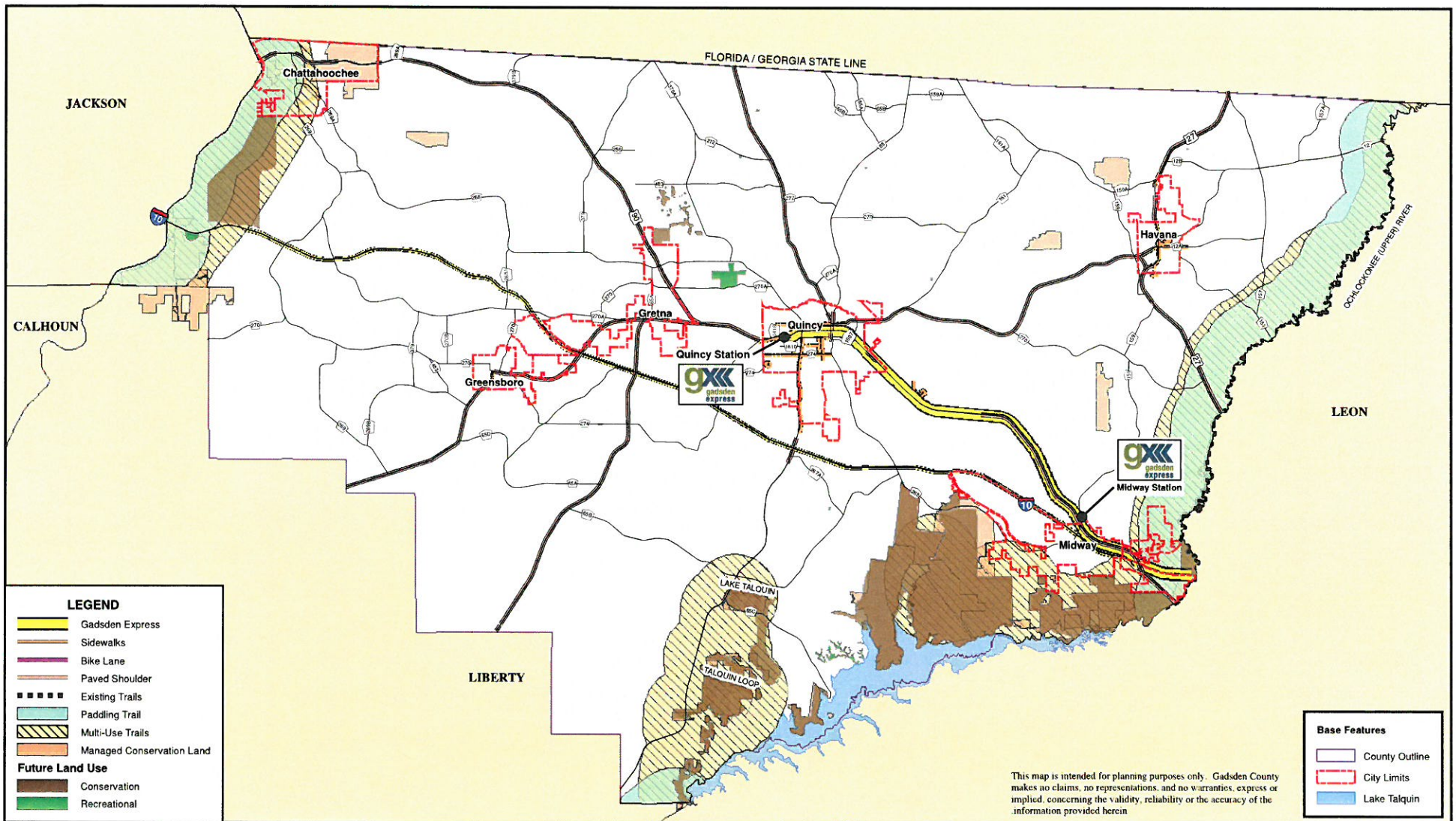
### GADSDEN COUNTY COMPREHENSIVE PLAN DATA AND ANALYSIS

0 0.5 1 2 3  
Miles

N  
1:14,000 ft  
MAP SCALE  
(11"x17" Print Format)







## EXHIBIT 10

## ENERGY CONSERVATION FEATURES

DATA SOURCE: Gadsden County Planning & Zoning, Gadsden County GIS  
University of Florida GeoPlan Center, Big Bend Transit  
Florida Dept. of Environmental Protection Office of Greenways & Trails  
Florida Natural Areas Inventory Florida Managed Areas

PREPARED BY: PREBLE-RISH, INC.  
SRay - July 2015

### GADSDEN COUNTY COMPREHENSIVE PLAN DATA AND ANALYSIS

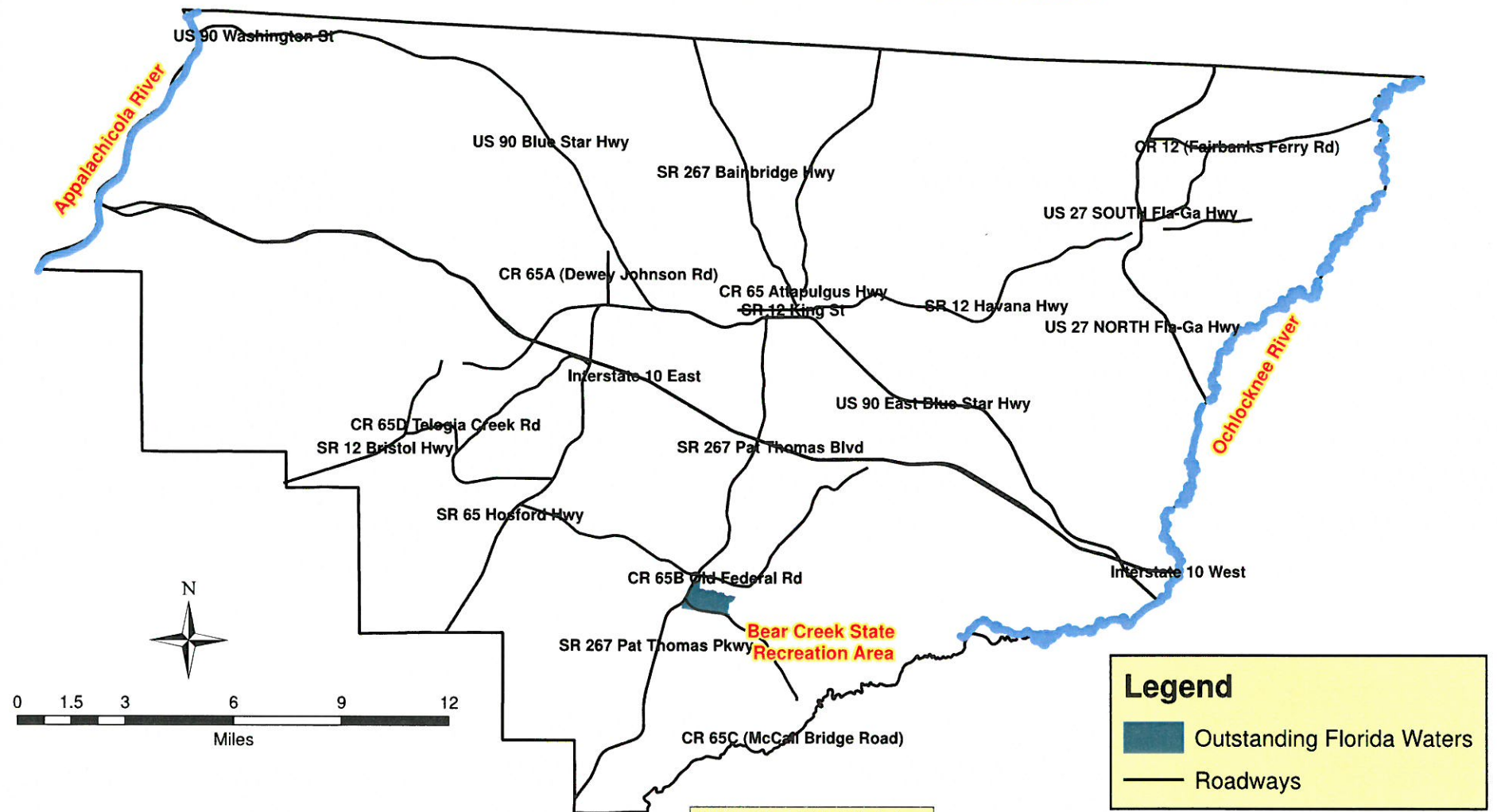
0 0.5 1 2 3  
Miles

N  
1:14,000 ft  
MAP SCALE  
(11"x17" Print Format)





# MAP 5.1 GADSDEN COUNTY OUTSTANDING FLORIDA WATERS



DATE: September 3, 2015  
SOURCE: Florida Administrative Code 62.302.400

Disclaimer: This map is intended for planning purposes only, and is not intended to make legal determinations. Gadsden County assumes no responsibilities found on the map.